

COMMERCIAL GAS MASTER-FIT® BTR



The Eliminator™ Self-Cleaning System

- Designed to significantly reduce or eliminate sediment build-up inside the tank
- Reduced sediment build-up maintains rated thermal efficiency and reduces water heating costs
- Self-cleaning system maximizes tank life

Factory-Installed Draft Diverter and Automatic Flue Damper (BTR-120-400 Models)

- BTR-500 Model features induced draft design and no damper
- Low-profile draft diverter helps for installation in tight spaces
- Automatic motorized flue damper helps minimize standby heat loss

Three Water Connection Options for Added Flexibility

- Hot and cold water connections can be made through front, top or rear of unit
- Eliminator™ system operates when cold water is connected through front

3-Year Limited Tank and 1-Year Warranty

- For complete warranty information, consult written warranty or go to hotwater.com



| Model Number | Gallon Capacity | Input BTU/HR Natural Gas | Recovery Capacity GPH @ 100°F Rise |
|---------------------|-----------------|--------------------------|------------------------------------|
| BTR-120* | 71 | 120,000 | 116 |
| BTR-154 | 81 | 154,000 | 149 |
| BTR-180 | 81 | 180,000 | 175 |
| BTR-197 | 100 | 199,000 | 193 |
| BTR-198 | 100 | 199,000 | 193 |
| BTR-199 | 81 | 199,000 | 193 |
| BTR-200 (A) | 100 | 199,000 | 193 |
| BTR-250* (A) | 100 | 250,000 | 242 |
| BTR-251* (A) | 65 | 251,000 | 243 |
| BTR-275* (A) | 100 | 275,000 | 267 |
| BTR-305 (A) | 65 | 305,000 | 296 |
| BTR-365 (A) | 85 | 365,000 | 354 |
| BTR-400 (A) | 100 | 390,000 | 378 |
| BTR-500 (A) | 85 | 500,000 | 485 |

Specify when ordering propane (LP) gas.

*Model BTR 120 is shipped with 6" x 5" flue outlet adapter. Models BTR 250, 251 and 275 are shipped with a 8" x 6" flue outlet adapter.

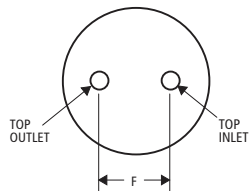
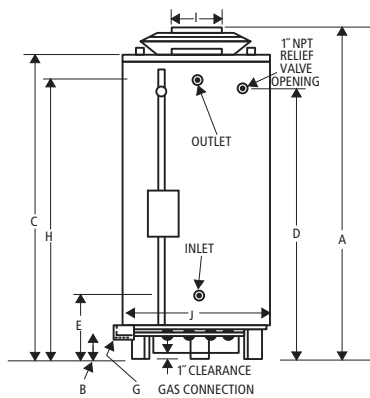
Standard models certified from sea level to 2,000 ft. elevation. Order SMR S54 for elevations up to 8,000 ft.

BTR-500 model features induced draft design and no damper.

Line drawings and dimensions on the following page.

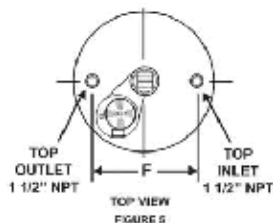
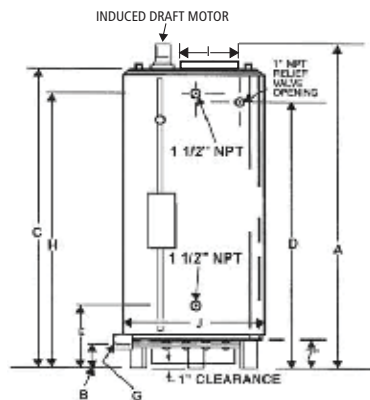
COMMERCIAL GAS MASTER-FIT® BTR (CONTINUED)

Master-Fit BTR 120-400



MODEL
BTR-120-400

Master-Fit BTR 500



MODEL
BTR-500

| Model Number | Dimensions in Inches | | | | | |
|--------------|----------------------|--------|--------|--------|----------|-----|
| | A | B | C | D | E | F |
| BTR-120* | 69-3/4 | 4-1/4 | 59-1/2 | 50-7/8 | 19-11/16 | 19 |
| BTR-154 | 73 | 4-1/4 | 66-1/2 | 57-7/8 | 19-11/16 | 19 |
| BTR-180 | 67-1/2 | 4-1/2 | 62 | 53-5/8 | 20-1/2 | 21 |
| BTR-197 | 75 | 4-1/2 | 70 | 61-5/8 | 20-1/2 | 21 |
| BTR-198 | 75 | 4-1/2 | 70 | 61-5/8 | 20-1/2 | 21 |
| BTR-199 | 67-1/2 | 4-1/2 | 62 | 53-5/8 | 20-1/2 | 21 |
| BTR-200(A) | 72 | 4-1/2 | 65-1/8 | 55-7/8 | 19-3/4 | 23 |
| BTR-250*(A) | 72 | 4-1/2 | 65-1/8 | 55-7/8 | 19-3/4 | 23 |
| BTR-251*(A) | 75 | 4-1/2 | 65-3/4 | 57-1/4 | 20 | N/A |
| BTR-275*(A) | 72 | 4-1/2 | 65-1/8 | 55-7/8 | 19-3/4 | 23 |
| BTR-305 (A) | 75 | 4-1/2 | 65-3/4 | 57-1/4 | 20 | N/A |
| BTR-365 (A) | 79-1/2 | 4-1/2 | 70-1/4 | 62-1/2 | 22-1/2 | 23 |
| BTR-400 (A) | 75-1/2 | 4-1/2 | 67-1/2 | 58-1/4 | 26-3/4 | 23 |
| BTR-500 (A) | 81-1/2 | 17-1/2 | 77-1/4 | 67-1/2 | 27 | 21 |

| Model Number | Dimensions in Inches | | | | Approx. Shipping Weight (lbs) | |
|--------------|----------------------|--------|---|--------|-------------------------------|------|
| | G | H | I | J | Standard | ASME |
| BTR-120* | 1/2 | 51-7/8 | 6 | 27-3/4 | 400 | - |
| BTR-154 | 1/2 | 59 | 6 | 27-3/4 | 470 | - |
| BTR-180 | 1/2 | 54-5/8 | 6 | 27-3/4 | 470 | - |
| BTR-197 | 1/2 | 62-5/8 | 6 | 27-3/4 | 603 | - |
| BTR-198 | 1/2 | 61-1/2 | 6 | 27-3/4 | 603 | - |
| BTR-199 | 1/2 | 54-5/8 | 6 | 27-3/4 | 470 | - |
| BTR-200(A) | 1/2 | 56-3/8 | 8 | 30-1/4 | 630 | 725 |
| BTR-250*(A) | 1/2 | 56-3/8 | 8 | 30-1/4 | 630 | 725 |
| BTR-251*(A) | 1/2 | 58-3/4 | 8 | 27-3/4 | 750 | 862 |
| BTR-275*(A) | 1/2 | 56-3/8 | 8 | 30-1/4 | 630 | 725 |
| BTR-305 (A) | 1/2 | 58-3/4 | 8 | 27-3/4 | 750 | 862 |
| BTR-365 (A) | 3/4 | 63 | 8 | 27-3/4 | 725 | 833 |
| BTR-400 (A) | 3/4 | 59 | 8 | 30-1/4 | 760 | 874 |
| BTR-500 (A) | 1 | 67-1/2 | 8 | 27-3/4 | 812 | 857 |

Specify when ordering propane (LP) gas.

*Model BTR 120 is shipped with 6" x 5" flue outlet adapter. Models BTR 250, 251 and 275 are shipped with a 8" x 6" flue outlet adapter.

Standard models certified from sea level to 2,000 ft. elevation. Order SMR S54 for elevations up to 8,000 ft.

BTR-500 model features induced draft design and no damper.